



FOR LEASE

## Fithian Building Second Floor Offices

629 State Street

Santa Barbara, CA 93101

### PROPERTY DETAILS

- The Fithian Building is a historic two-story retail and office building prominently located in the center of downtown Santa Barbara's retail district
- Adjacent to farmer's market on Tuesday
- High foot traffic volume
- Neighboring retailers on this block include Billabong, Vans, Volcom, Yogurtland, and The Habit Burger.
- Existing 2nd floor tenant mix includes therapists, engineers, attorneys, photographers and artists, and various private office user



01 – Fithian Building historical photo.

**SUITE 203**

- Rate: \$1,275/mo. Gross Rent
- Square feet: 435 sf

**SUITE 203B**

- Rate: \$1,350/mo. Gross Rent
- Square feet: 463 sf

**SUITE 203C**

- Rate: \$1,350/mo. Gross Rent
- Square feet: 458 sf

**SUITE 246**

- Rate: \$1,100/mo. Gross Rent
- Square feet: 437 sf

**SUITE 248**

- Rate: \$1,100/mo. Gross Rent
- Square feet: 440 sf

**Gross Rent: All utilities included (excluding insurance and internet)**

**FLOOR PLAN**



COMMON AREA & BUILDING AMENITIES



AVAILABLE SUITE INTERIORS

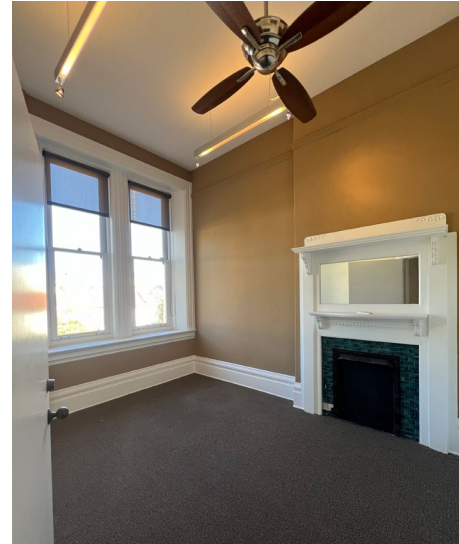
---



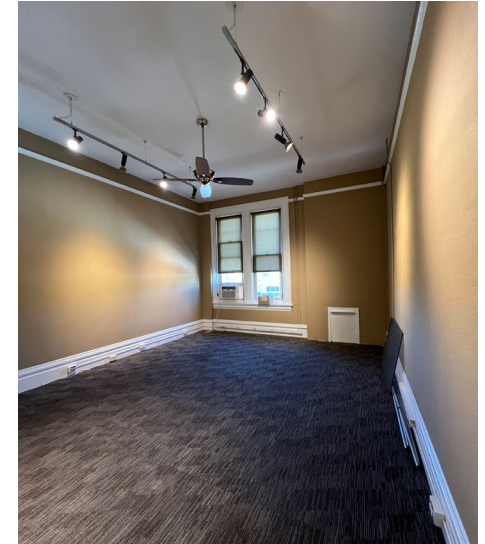
02 – Suite 203 facing State St.



03 – Suite 203b facing State St.



04 – Suite 203c facing State St.



05 – Suite 246 with Large Windows